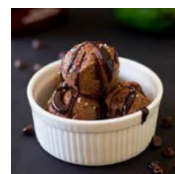


ΘΕΜΑ 1. ΚΑΤΑΝΟΗΣΗ ΓΡΑΠΤΟΥ ΛΟΓΟΥ

Read the text and decide if each statement (1-10) is True (A) or False (B).

Tony, Harry, Elena, Gina, George, Nick and their teacher, Miss Anna Stratou, are at a cafeteria in a nearby town during a school day trip. They are all busy reading the menu.



Miss Anna: Are you ready? Let's call the waitress. Waitress!
Waitress: Yes, Miss? Have you chosen?
Miss Anna: Almost. One fruit cocktail for me, an ice-cream for George...
George: I'd prefer the ice-cream with the cherry on top in the pretty blue-pink bowl you serve it in.
Waitress: Anything else?
Miss Anna: Elena, Tony, Gina, Nick, Harry, what will you have?
Elena: I'll have a salad and a sandwich.
Tony: I'll have a coke.
Gina: Me too.
Nick: I'll have a nice piece of fruitcake and an ice-cream like George's.
Harry: I'd like a milk shake.
Waitress: OK. Anything else?
Miss Anna: No, thank you. Er, wait, please, there's another boy coming on his bicycle. Hey, Bill, shall we order something for you? ... What? ... OK. A fresh orange juice for the boy, please.

STATEMENTS		A	B
		TRUE	FALSE
1.	The students are outside an ice-cream shop.		
2.	The teacher is sitting at a different table from the students.		
3.	All students choose to have ice-cream for dessert.		
4.	The teacher calls the waitress to take their order.		
5.	Two of the students want to share a salad.		
6.	George wants to have his ice-cream in a bowl.		
7.	The last person who places an order is Bill.		
8.	Nick orders the same thing with Miss Anna.		
9.	Bill is going to join the group.		
10.	Bill would like to have a fruit salad.		

ΘΕΜΑ 2^ο. ΛΕΞΙΚΟΓΡΑΜΜΑΤΙΚΗ

Fill each gap in sentences 11-20 with the correct word from the box below (A-J). Use each word only once.

A.	trip	B.	menu	C.	served	D.	waitress	E.	milkshakes
F.	cocktails	G.	prefers	H.	order	I.	nearby	J.	pretty

11.	She is working as a at a nearby restaurant at the moment.
12.	She watching tennis to playing it.
13.	Rosie is going on a class to the Wildlife Park today; that's why she is so excited!
14.	Many buildings were damaged by the explosion in the shopping centre.
15.	Breakfast is in our restaurant between 7.00 and 11.00.
16.	"May I take your now?" asked the waiter.
17.	We were all in the bar sipping when we heard a loud noise and ran to the window.
18.	"What's on the today?" asked the man. "Roast beef with fresh vegetables, sir" said the waiter.
19.	That's a hat you're wearing. Where did you get it from?
20.	Drinks such as chocolate have minimal nutritional value but can easily contribute to a calorie intake that is much higher than the one recommended by doctors.